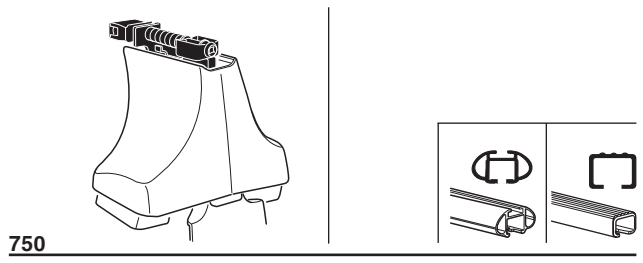
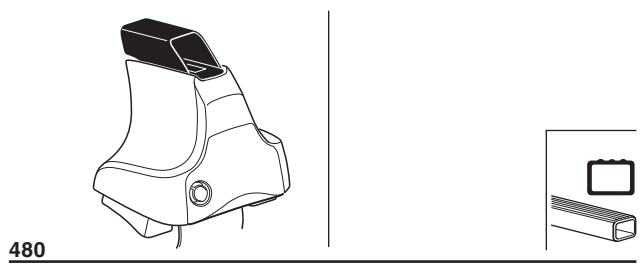
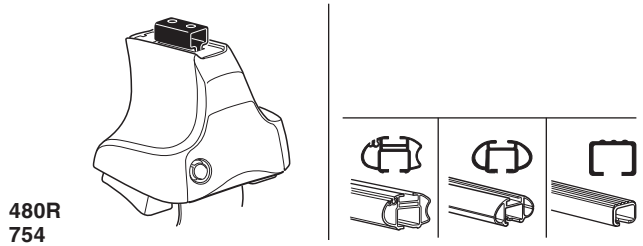


# Kit 1557

HONDA Civic, 2-dr Coupé, 06- (NA)



xx kg  
 xx lbs

+ 7 kg / 15,4 lbs  
 =

3 kg / 6,6 lbs

**Max. 40 kg**  
**Max. 88 lbs**

80 km/h  
 50 Mph  
 130 km/h  
 80 Mph  
 40 km/h  
 25 Mph  
**km/h**  
**Mph**

**THULE**

+

**Instructions**  
 Kit XXXX  
  
**THULE**

x1

x4

x4

x4  
 x4

**480R/754**

---

x1

x4

x4

x4

**480**

---

x1

x4

x4

**750**

x2 x2 x2 x4	x2	x2 x2 x4 x4	x2 x2	x2

← **679** x 2

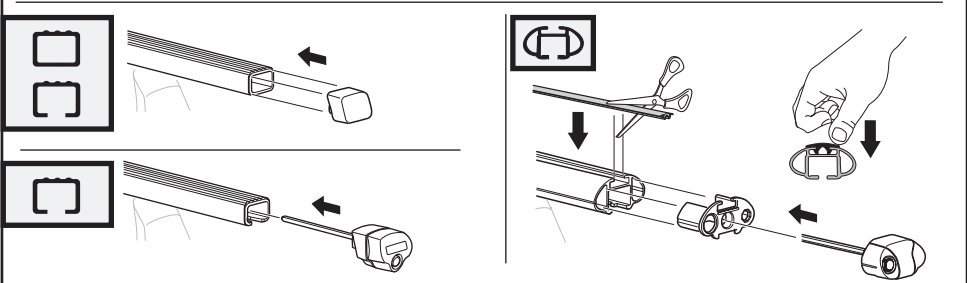
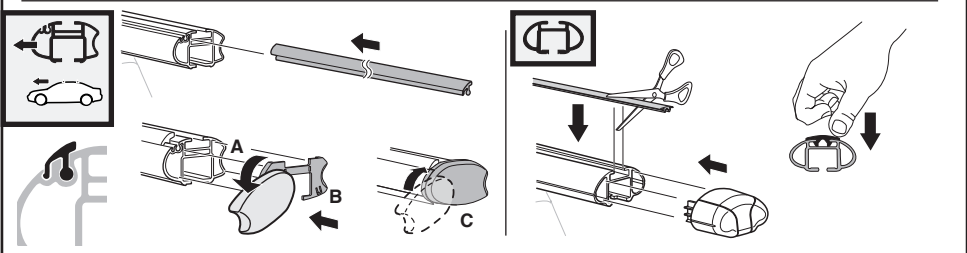
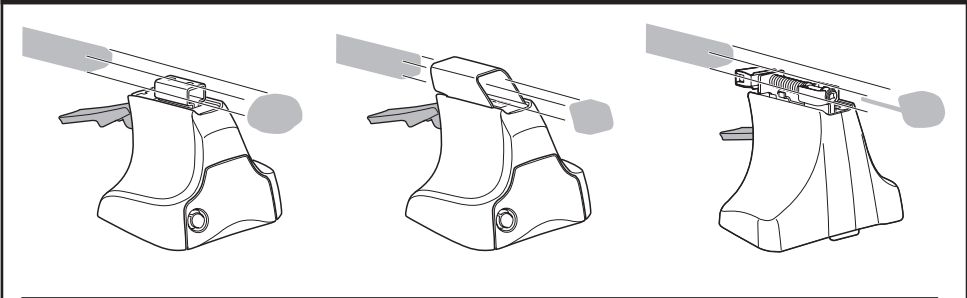
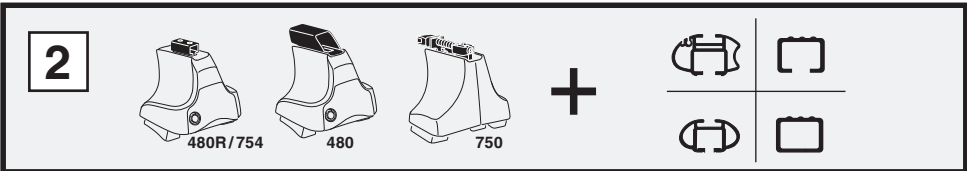
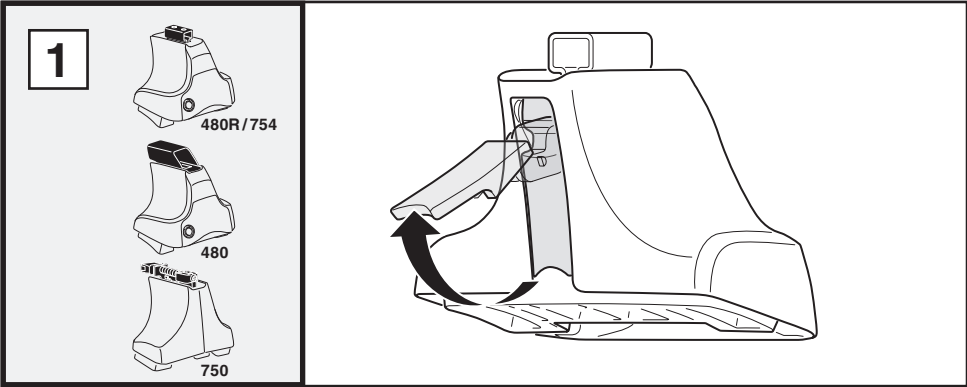
← **155** x 2

← **191** x 2

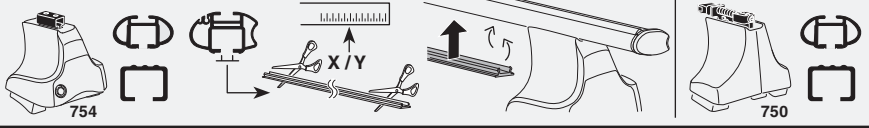
← **192** x 2

x 1

**Kit**



**3**



**1**

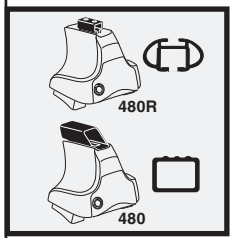
**2**

<b>HONDA Civic, 2-dr Coupé, 06- (NA)</b>	<b>X</b>
	<b>46</b>

**1**

**2**

<b>HONDA Civic, 2-dr Coupé, 06- (NA)</b>	<b>Y</b>
	<b>42</b>



**1**

**2**

<b>HONDA Civic, 2-dr Coupé, 06- (NA)</b>	<b>X inch</b>	<b>X mm</b>
	<b>43 3/4"</b>	<b>1111 mm</b>

**1**

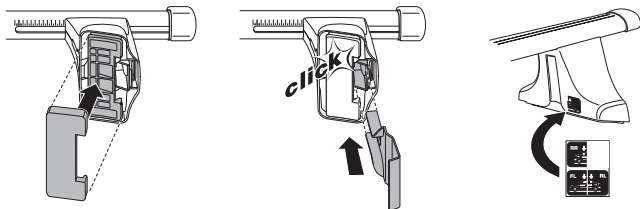
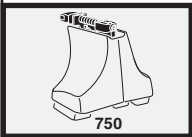
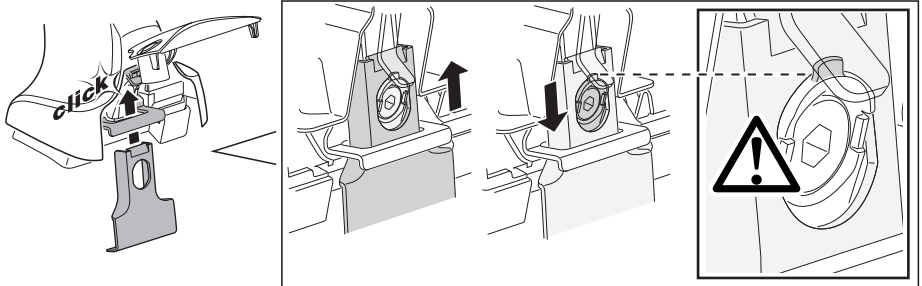
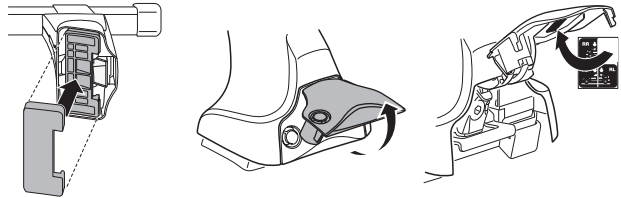
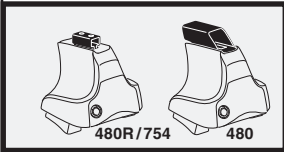
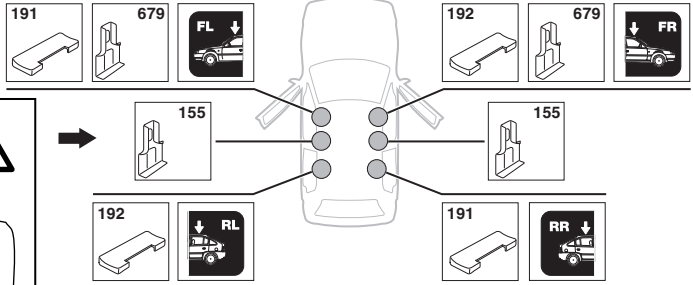
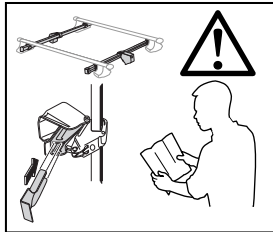
**2**

<b>HONDA Civic, 2-dr Coupé, 06- (NA)</b>	<b>Y inch</b>	<b>Y mm</b>
	<b>42 1/8"</b>	<b>1071 mm</b>

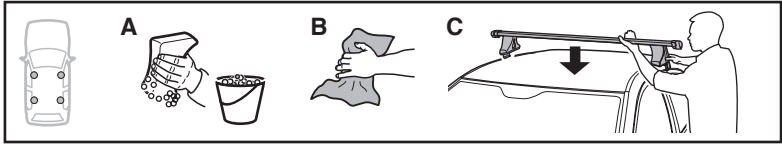
# 4

HONDA Civic, 2-dr Coupé, 06- (NA)

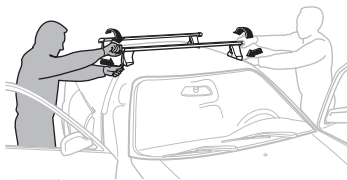
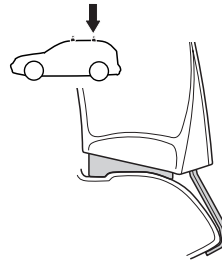
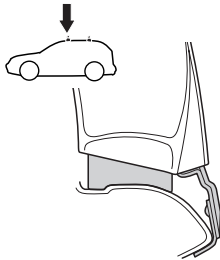
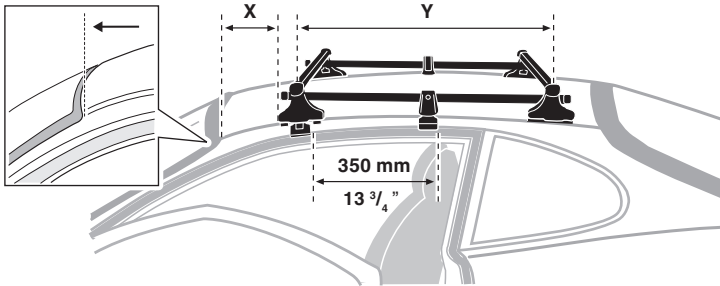
## SRA



5



	X mm	Y mm	X inch	Y inch
<b>HONDA Civic, 2-dr Coupé, 06– (NA)</b>	<b>140 mm</b>	<b>700 mm</b>	<b>5 1/2"</b>	<b>27 1/2"</b>



**GB/US** Tighten alternately

**D** Die Schrauben abwechselnd anziehen

**F** Serrer alternativement chaque côté

**NL** Afwisselend aan de linker- en de rechterkant aandraaien

**I** Alternare il serraggio delle viti

**E** Apretar alternativamente

**PT** Aperte alternadamente

**S** Dra åt växelvis

**FIN** Kierrä vuorotellen

**EST** Pinguldage vaheldumisi

**LAT** Pielieciet pamīšus

**LIT** Užsukinkite pakaitomis

**PL** Śruby dokręcaj naprzemiennie

**RU** Затягивайте попеременно

**CZ** Pokręťta bagażníka dokręcaj dokręcaj naprzemiennie.

**SK** Doťahujte striedavo

**SLO** Privijajte izmenično.

**HR** Naizmjenično zategnite

**HU** Egymástól függetlenül szorítandó

**GR** Σφίγγετε εναλλάξ

**TR** Dönüşümlü sıkın

**中文** 交替拧紧

**한국어** 번갈아 가며 조이십시오.

**日本語** 交互に締め付けてください。

**ไทย** ชั้้นในแบบสลับ

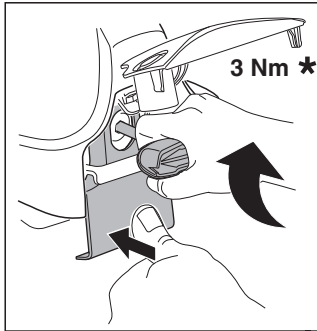
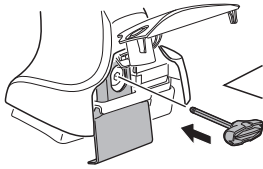
6



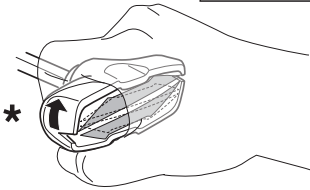
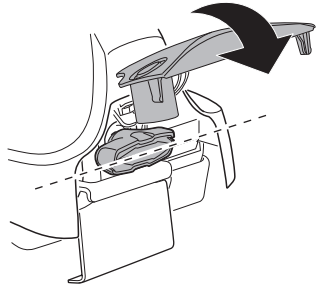
480R/754



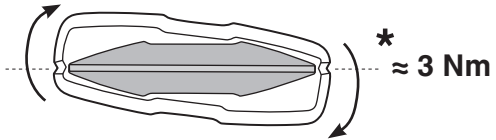
480



3 Nm \*



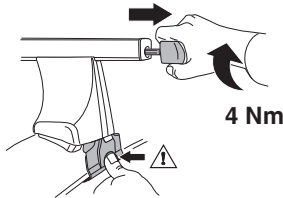
\*



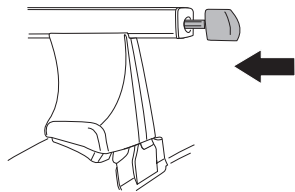
\* ≈ 3 Nm



750



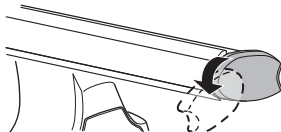
4 Nm



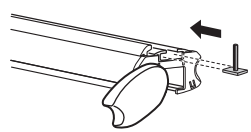
i



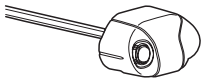
1



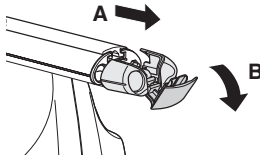
2



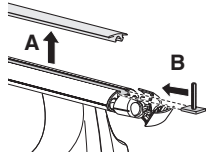
i



1



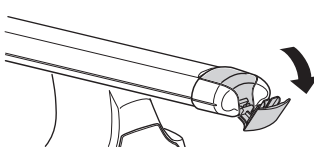
2



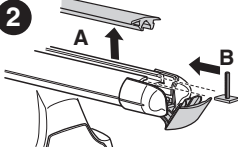
i

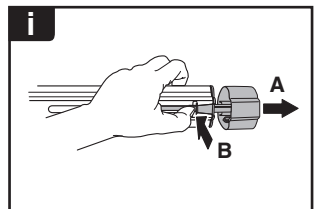
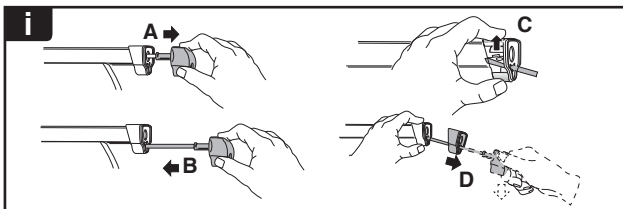
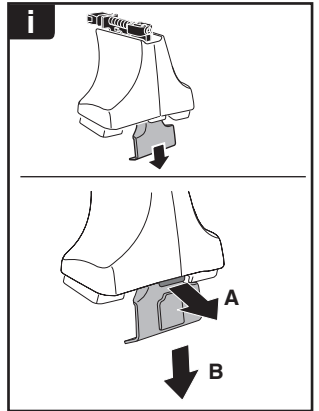
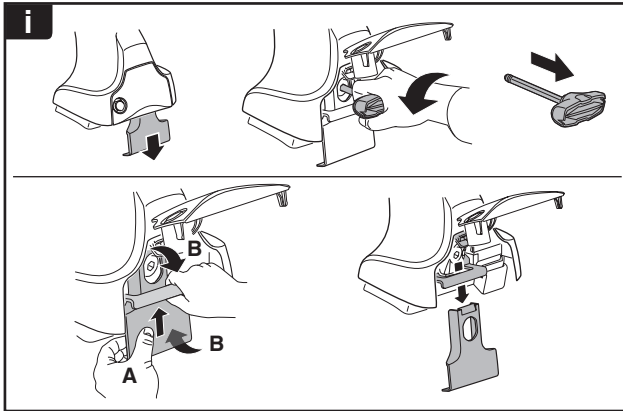
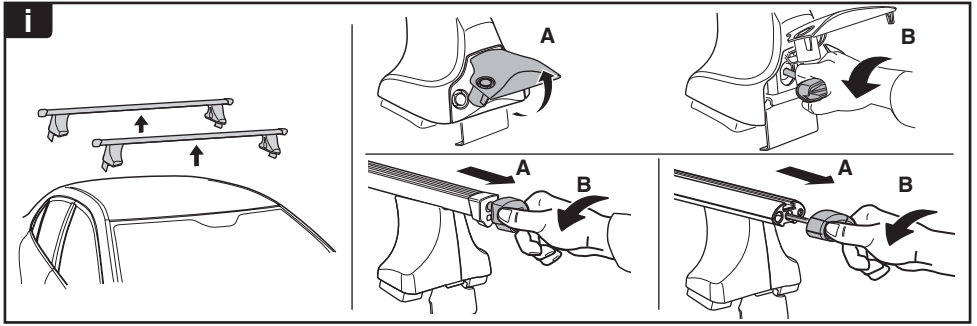


1

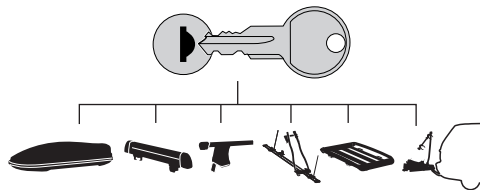


2

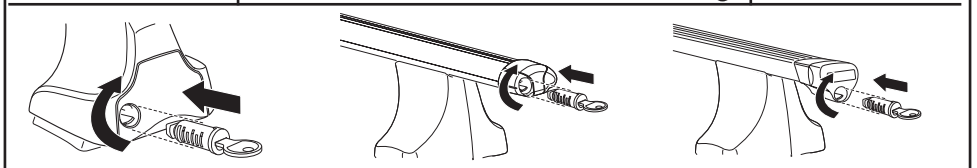




**THULE**  
SWEDEN  
**ONE  
KEY  
SYSTEM**



- 544 (x4)
- 596 (x6)
- 588 (x8)
- NA 510 (x10)
- EUR 452 (x12)
- ASIA



WW ▶ Thule Sweden AB, Box 69, 330 33 Hillerstorp, SWEDEN  
NA ▶ Thule Inc., 42 Silvermine Road, Seymour, Connecticut 06483, USA

info@thule.com  
customer.service@thule.com

www.thule.com