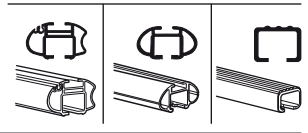
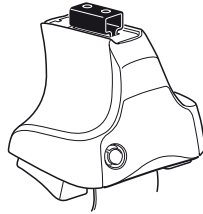


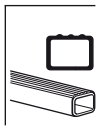
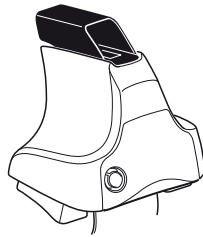
# Kit 1495

SKODA Superb, 4-dr Sedan, 08-

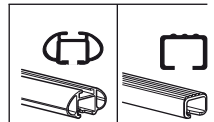
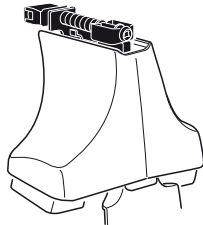
480R  
754



480

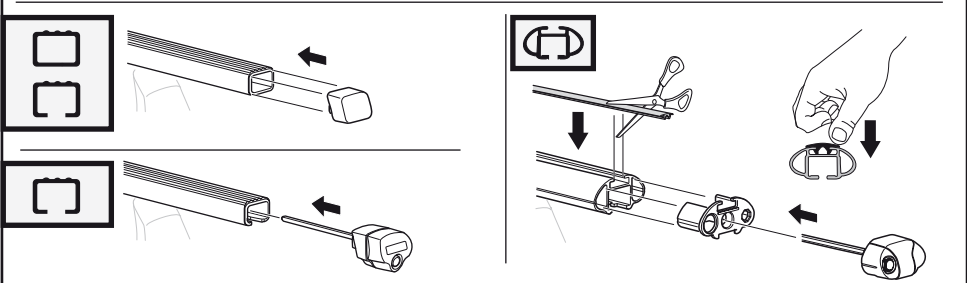
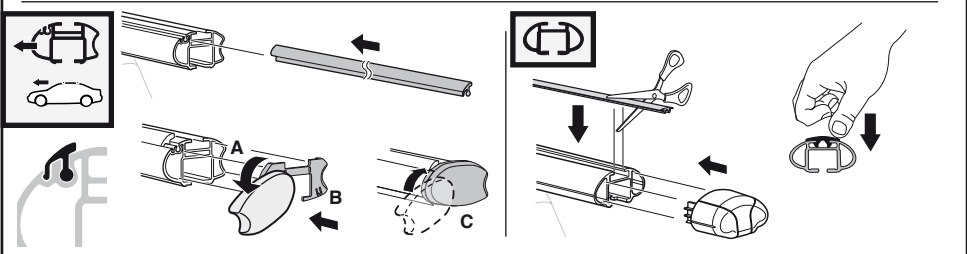
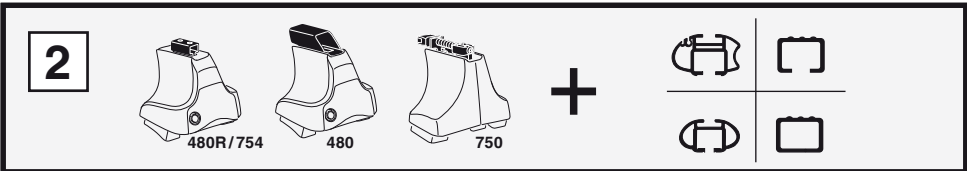
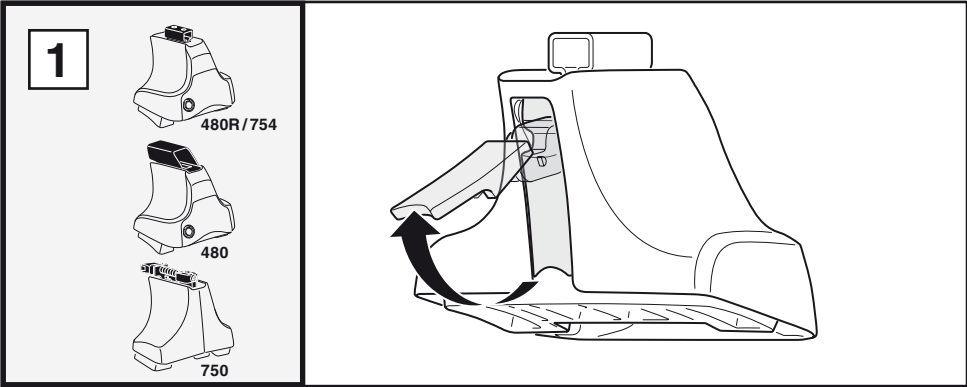


750

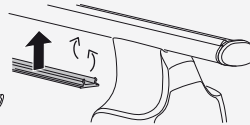
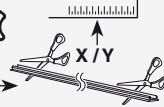


x2	x2	x2	x2	x2
x2	x2	x2	x2	x2
x2	x2	x4	x2	x2
x4		x4		

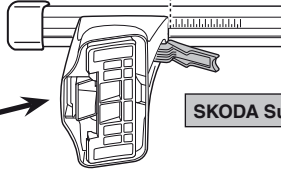
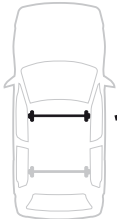
**Kit**



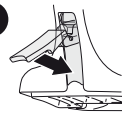
3



1



2

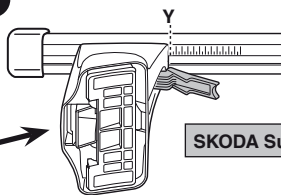
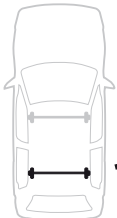


SKODA Superb, 4-dr Sedan, 08-

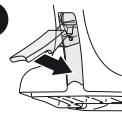
X

40

1



2



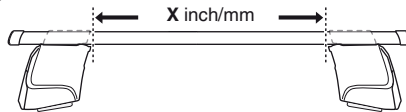
SKODA Superb, 4-dr Sedan, 08-

Y

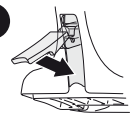
39



1



2



SKODA Superb, 4-dr Sedan, 08-

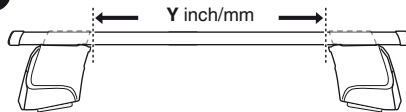
X inch

41 <sup>3</sup>/<sub>8</sub> "

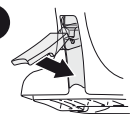
X mm

1051 mm

1



2



SKODA Superb, 4-dr Sedan, 08-

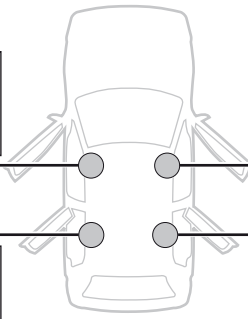
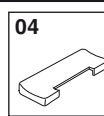
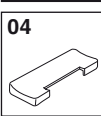
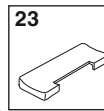
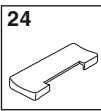
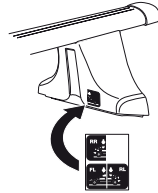
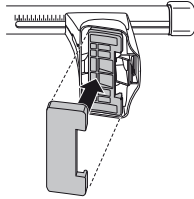
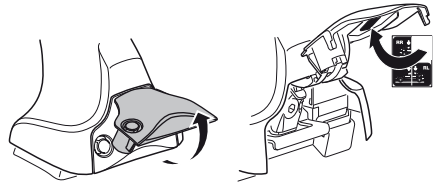
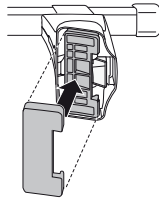
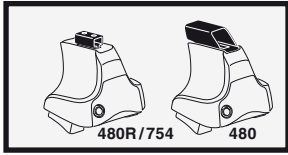
Y inch

41 "

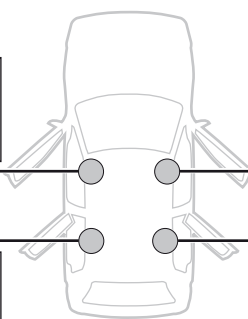
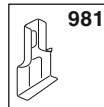
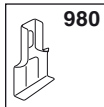
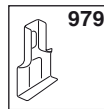
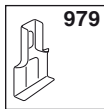
Y mm

1041 mm

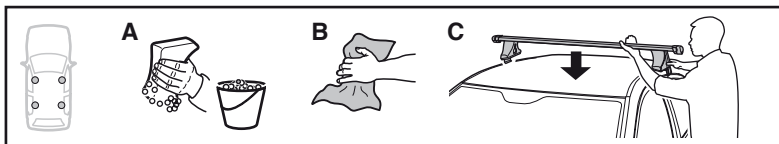
4



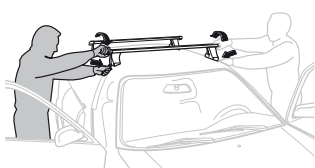
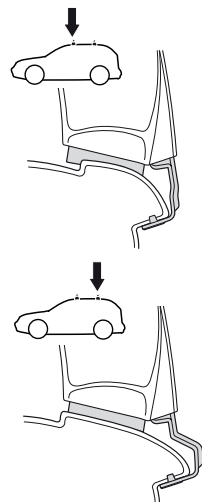
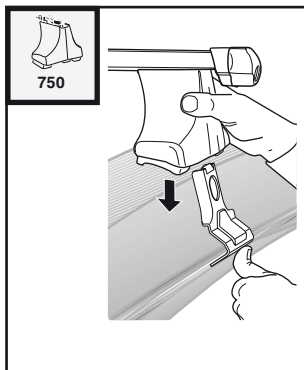
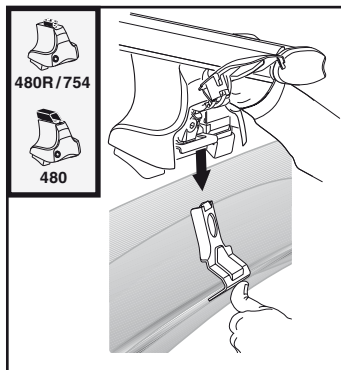
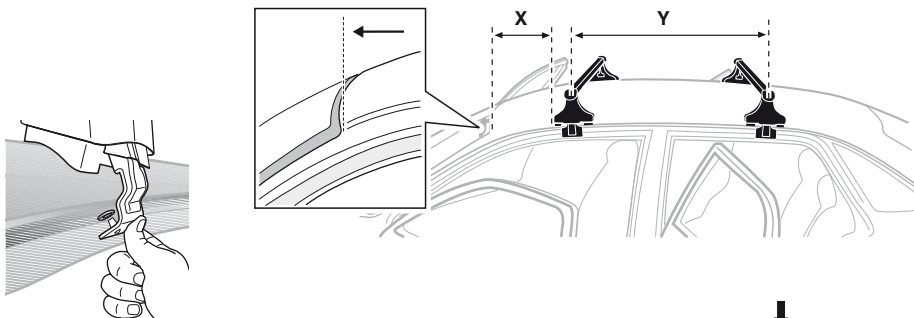
5



5



	X mm	Y mm	X inch	Y inch
SKODA Superb, 4-dr Sedan, 08-	380 mm	810 mm	15"	31 7/8"



- |              |   |            |   |
|--------------|---|------------|---|
| <b>GB/US</b> | Tighten alternately                                     | <b>CZ</b>  | Pokręťta багаžníka dokřečaj dokřečaj napřezmiennie. |
| <b>D</b>     | Die Schrauben abwechselnd anziehen                      | <b>SK</b>  | Dofáhuje striedavo                                  |
| <b>F</b>     | Serrer alternativement chaque côté                      | <b>SLO</b> | Privijajte izmenično.                               |
| <b>NL</b>    | Afwisselend aan de linker- en de rechterkant aandraaien | <b>HR</b>  | Naizmjenično zategnite                              |
| <b>I</b>     | Alternare il serraggio delle viti                       | <b>HU</b>  | Egymástól függetlenül szorítandó                    |
| <b>E</b>     | Apretar alternativamente                                | <b>GR</b>  | Σφιγίγστε εναλλάξ                                   |
| <b>PT</b>    | Aperte alternadamente                                   | <b>TR</b>  | Dönüşümlü sıkın                                     |
| <b>S</b>     | Dra åt växelvis   | <b>中文</b>  | 交替拧紧  |
| <b>FIN</b>   | Kierrä vuorotellen                                      | <b>한국어</b> | 번갈아 가며 조이십시오.                                       |
| <b>EST</b>   | Pinguldage vaheldumisi                                  | <b>日本語</b> | 交互に締め付けてください。                                       |
| <b>LAT</b>   | Pielieciet pamišus                                      | <b>ไทย</b> | ขันในแบบสลับ  |
| <b>LIT</b>   | Užsukinėkite pakaitomis                                 |            |   |
| <b>PL</b>    | Śruby dokręcaj naprzemiennie                            |            |   |
| <b>RU</b>    | Затягивайте попеременно                                 |            |   |

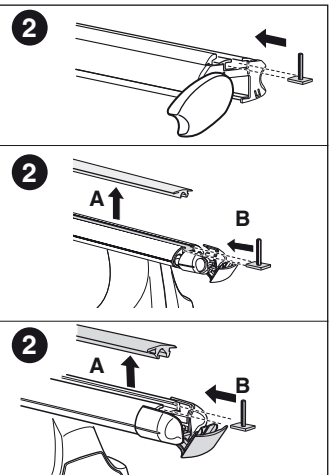
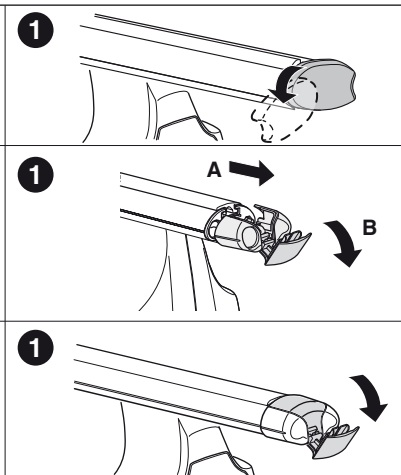
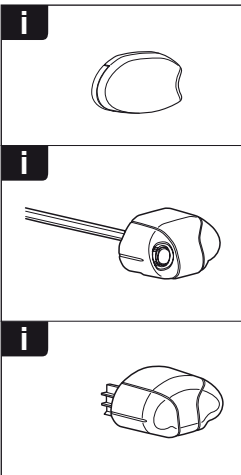
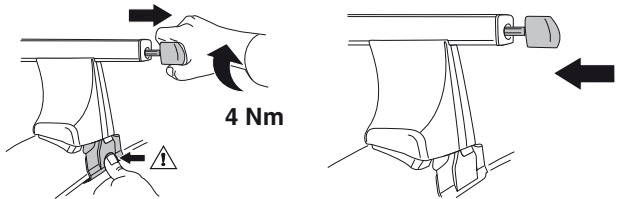
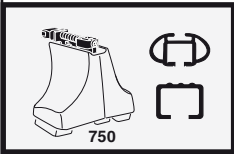
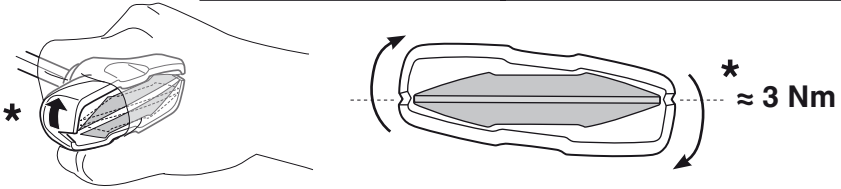
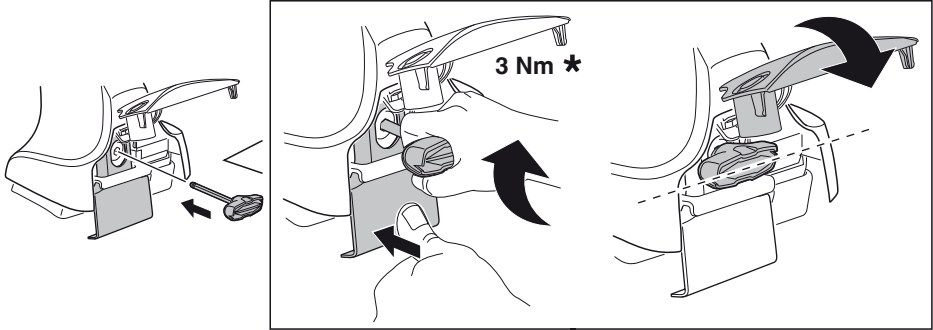
6

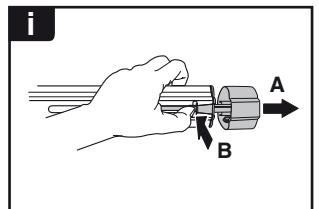
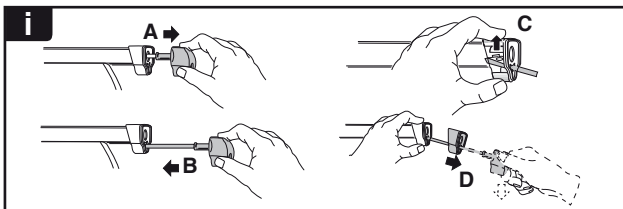
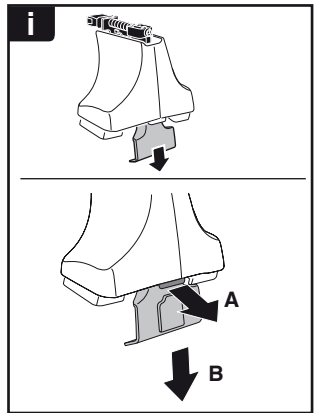
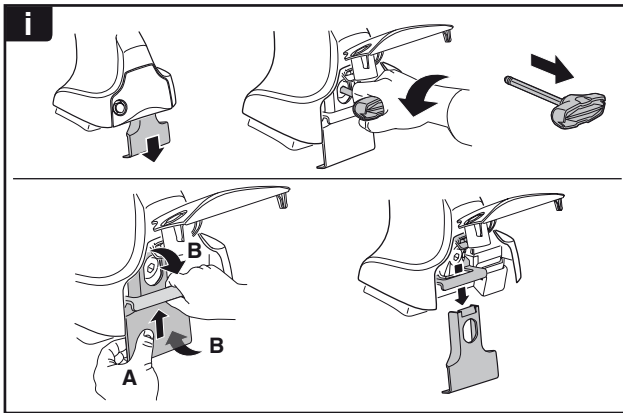
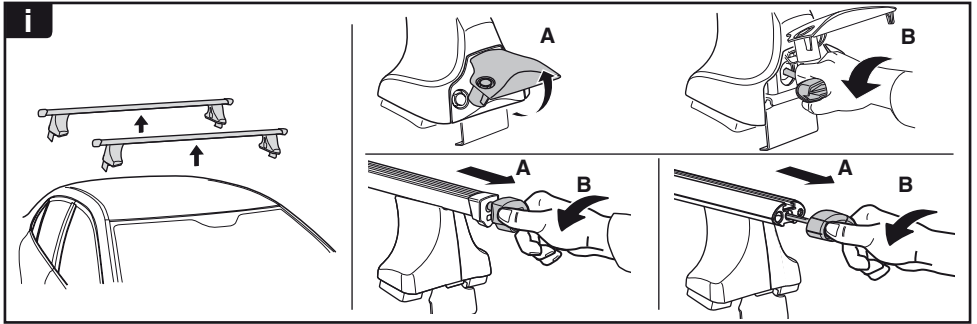


480R/754

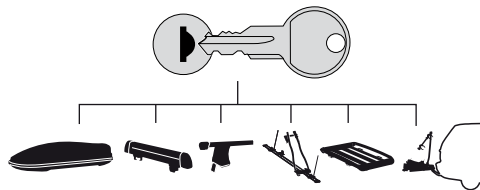


480

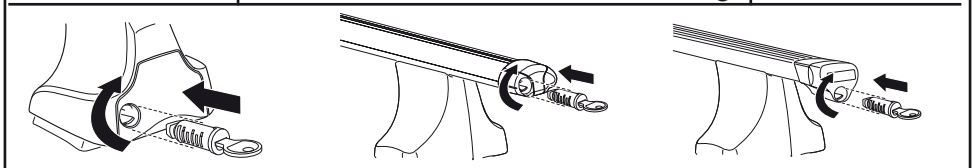




**THULE**  
SWEDEN  
**ONE  
KEY  
SYSTEM**



- 544 (x4)
- 596 (x6)
- 588 (x8)
- NA 510 (x10)
- EUR 452 (x12)
- ASIA



WW ▶ Thule Sweden AB, Box 69, 330 33 Hillerstorp, SWEDEN  
NA ▶ Thule Inc., 42 Silvermine Road, Seymour, Connecticut 06483, USA

info@thule.com  
customer.service@thule.com

www.thule.com