

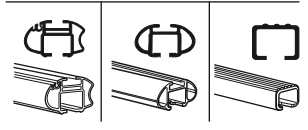
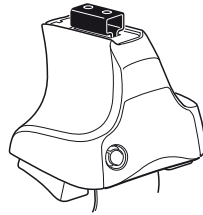
Kit 1366

MINI Cooper (Mk.I), 3-dr Hatchback, 01-06 / *03-07

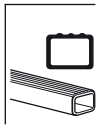
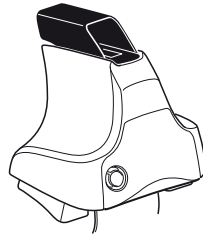
MINI Cooper (Mk.II), 3-dr Hatchback, 07- / *08-

*North America

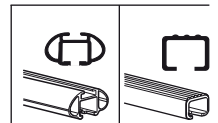
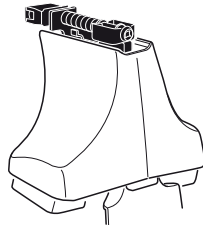
480R
754



480



750



xx kg / xx lbs + 7 kg / 15,4 lbs = **Max. 50 kg**
Max. 110 lbs
 3 kg / 6,6 lbs

80 km/h 50 Mph
 130 km/h 80 Mph
 40 km/h 25 Mph
 km/h Mph

THULE + **Kit XXXX**

x1 x4 x4 x4 x4
480R/754

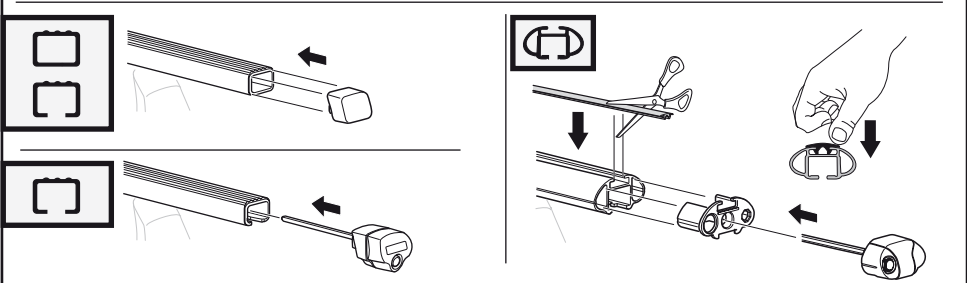
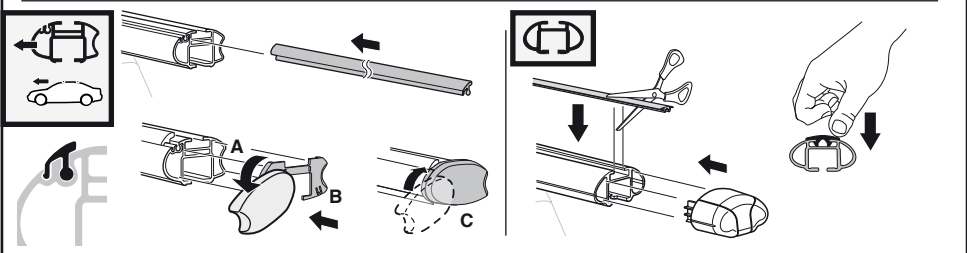
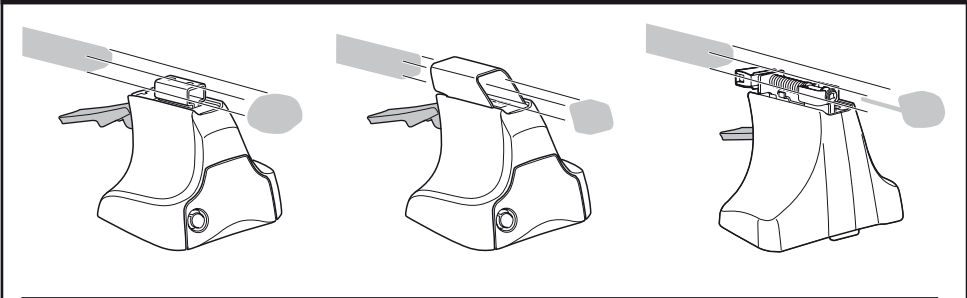
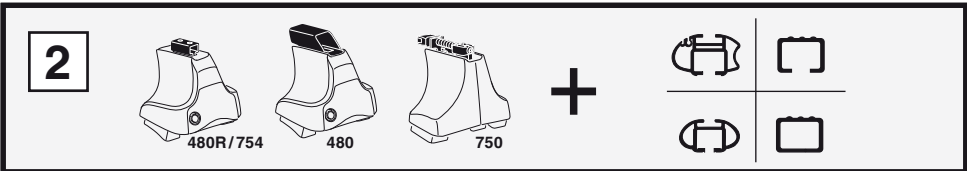
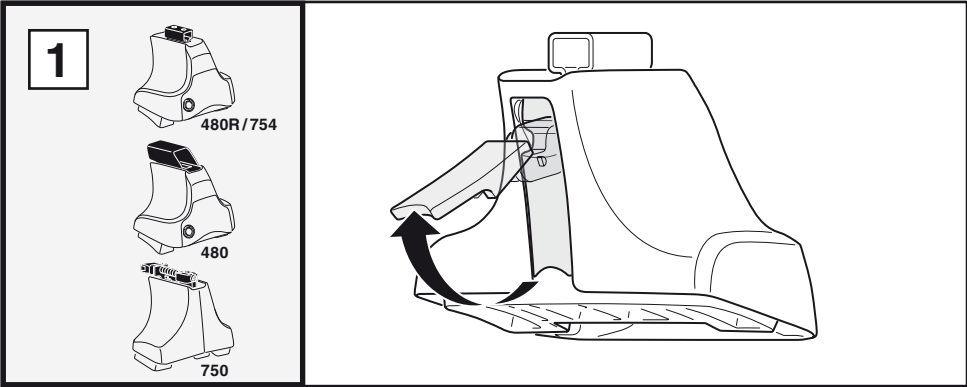
x1 x4 x4 x4 x4
480

x1 x4 x4
750

x2	x2	x2	x2	x2
x2	x2	x2	x2	x2
x2	x2	x4	x4	x2
x4		x4		

659 x 4 **182** x 4 x 1

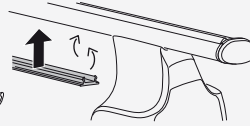
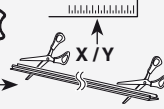
Kit



3



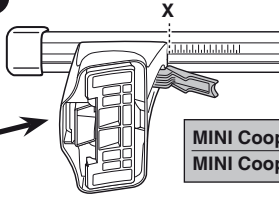
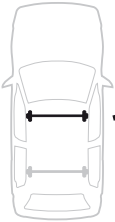
754



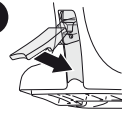
750



1

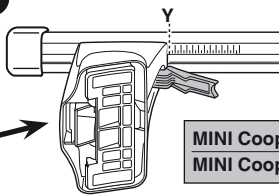


2

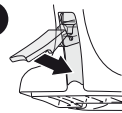


	X
MINI Cooper (Mk.I), 3-dr Hatchback, 01-06 / *03-07	31
MINI Cooper (Mk.II), 3-dr Hatchback, 07- / *08-	28

1



2



	Y
MINI Cooper (Mk.I), 3-dr Hatchback, 01-06 / *03-07	32
MINI Cooper (Mk.II), 3-dr Hatchback, 07- / *08-	32

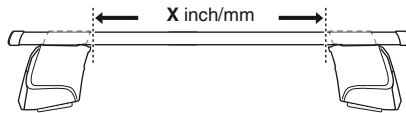


480R

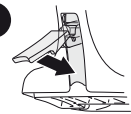


480

1

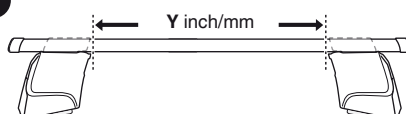


2

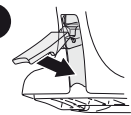


	X inch	X mm
MINI Cooper (Mk.I), 3-dr Hatchback, 01-06 / *03-07	37 ⁷ / ₈ "	961 mm
MINI Cooper (Mk.II), 3-dr Hatchback, 07- / *08-	36 ⁵ / ₈ "	931 mm

1

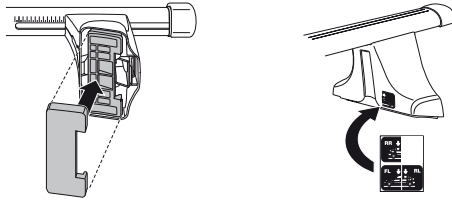
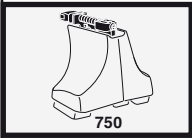
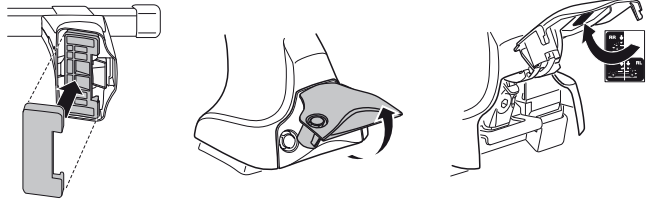
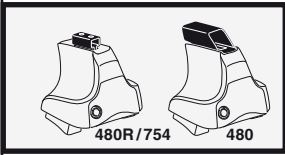


2

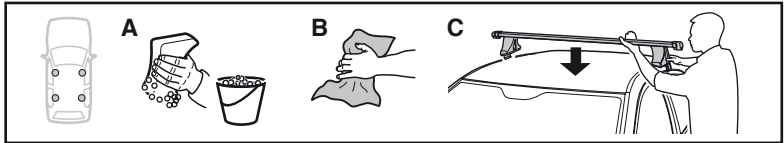


	Y inch	Y mm
MINI Cooper (Mk.I), 3-dr Hatchback, 01-06 / *03-07	38 ¹ / ₄ "	971 mm
MINI Cooper (Mk.II), 3-dr Hatchback, 07- / *08-	38 ¹ / ₄ "	971 mm

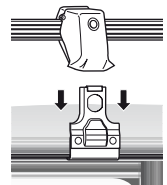
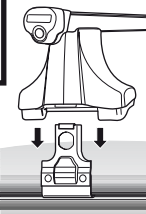
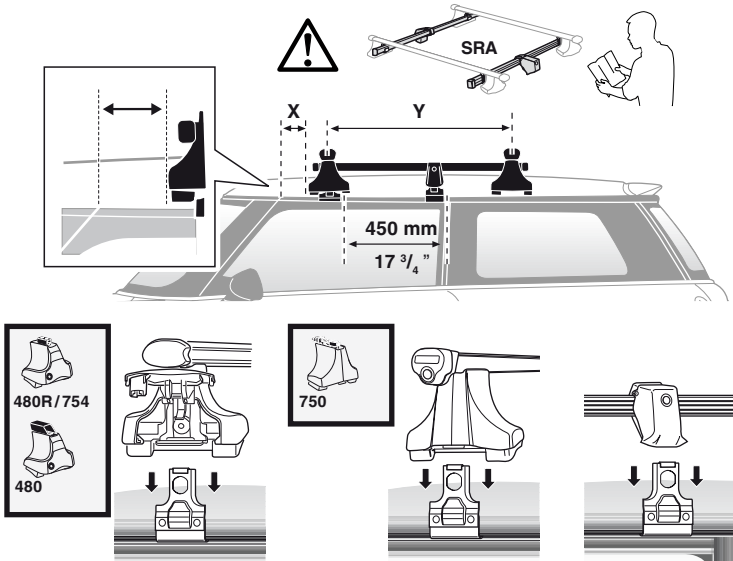
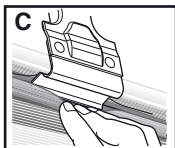
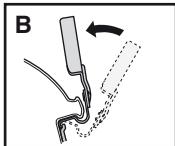
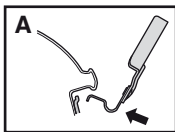
4



5



	X mm	Y mm	X inch	Y inch
MINI Cooper (Mk.I), 3-dr Hatchback, 01-06 / *03-07	110 mm	700 mm	4 3/8"	27 1/2"
MINI Cooper (Mk.II), 3-dr Hatchback, 07- / *08-	110 mm	700 mm	4 3/8"	27 1/2"



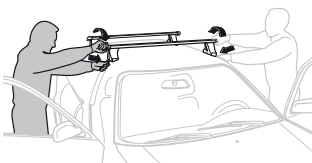
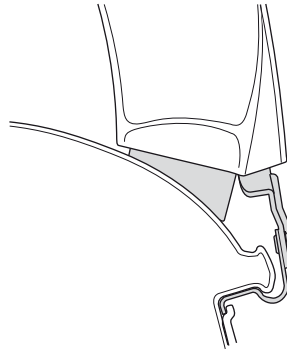
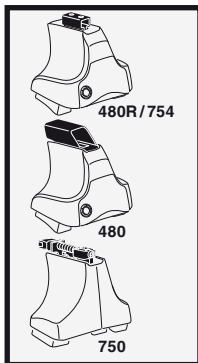
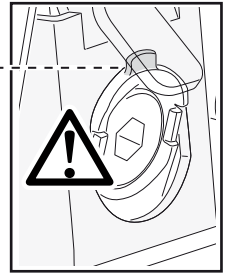
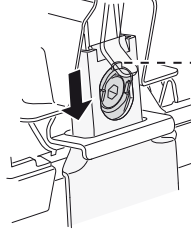
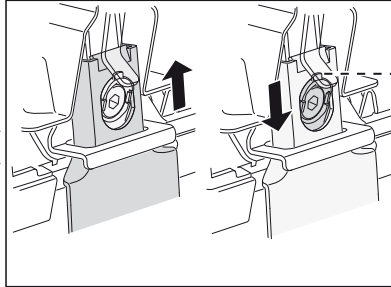
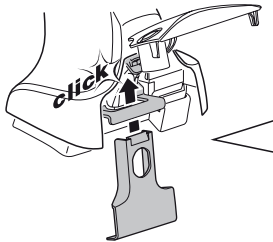
6



480R/754

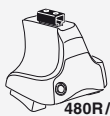


480



GB/US	Tighten alternately	CZ	Pokřetla багаžníka dokřečaj dokřečaj napržeimenne.
D	Die Schrauben abwechselnd anziehen	SK	Dotahujte striedavo
F	Serrer alternativement chaque côté	SLO	Privijajte izmenično.
NL	Afwisselend aan de linker- en de rechterkant aandraaien	HR	Naizmjenično zategnite
I	Alternare il serraggio delle viti	HU	Egymástól függetlenül szorítandó
E	Apretar alternativamente	GR	Σφιγγετε εναλλάξ
PT	Aperte alternadamente	TR	Dönüşümlü sıkın
S	Dra åt växelvis	中文	交替拧紧
FIN	Kierrä vuorotellen	한국어	변갈아 가며 조이십시오.
EST	Pinguldage vaheldumisi	日本語	交互に締め付けてください。
LAT	Pielvelciēt pamišus	ไทย	ขันในแบบสลับ
LIT	Užsukinėkite pakaitomis		
PL	Śruby dokřečaj napržeimenne		
RU	Затягивайте попеременно		

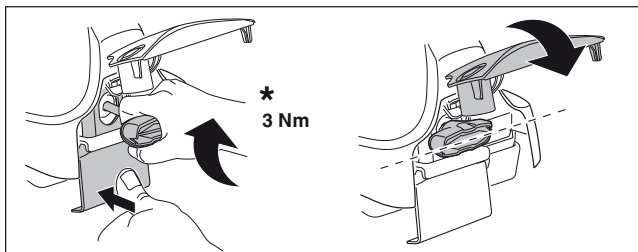
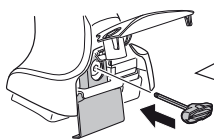
7



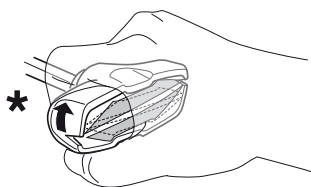
480R/754



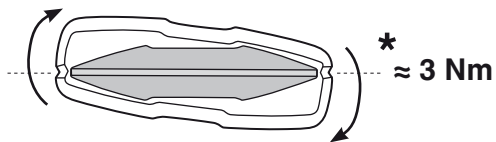
480



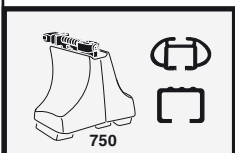
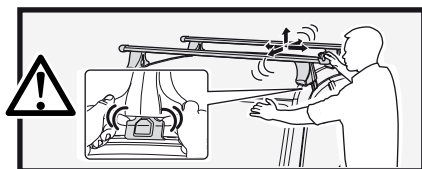
*
3 Nm



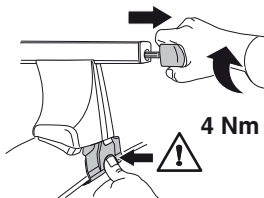
*



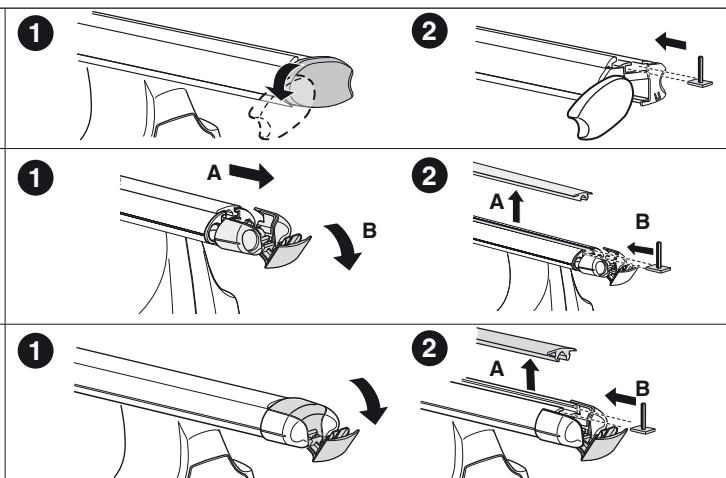
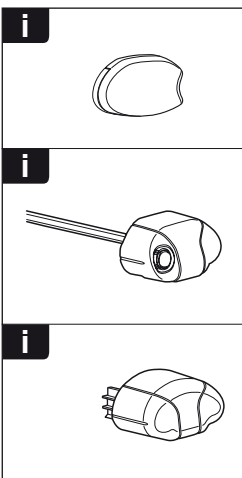
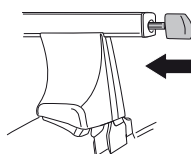
*
≈ 3 Nm

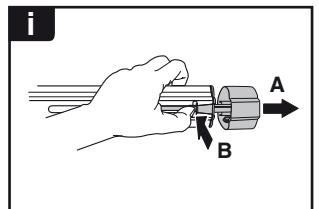
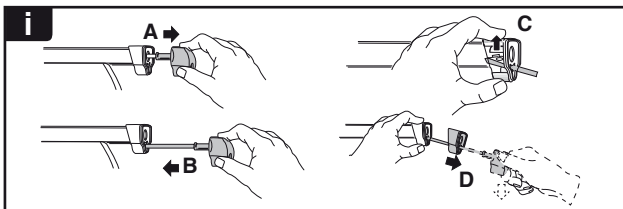
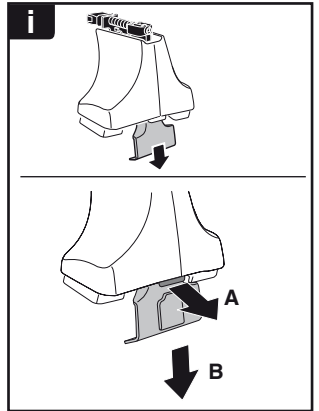
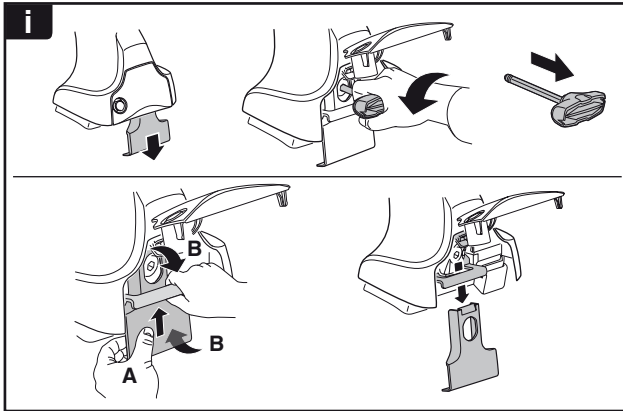
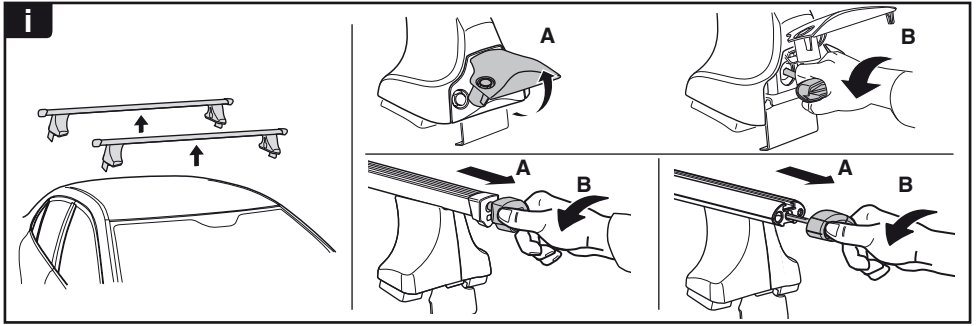


750

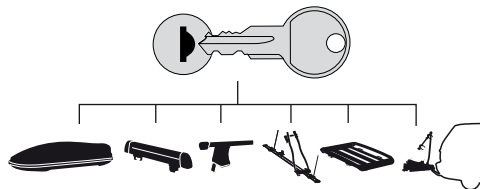


4 Nm

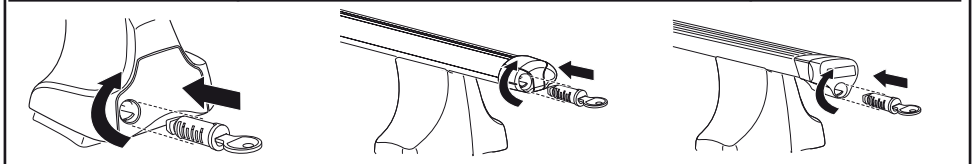




THULE
SWEDEN
**ONE
KEY
SYSTEM**



- 544 (x4)
- 596 (x6)
- 588 (x8)
- NA 510 (x10)
- EUR 452 (x12)
- ASIA



WW ▶ Thule Sweden AB, Box 69, 330 33 Hillerstorp, SWEDEN
NA ▶ Thule Inc., 42 Silvermine Road, Seymour, Connecticut 06483, USA

info@thule.com
customer.service@thule.com

www.thule.com